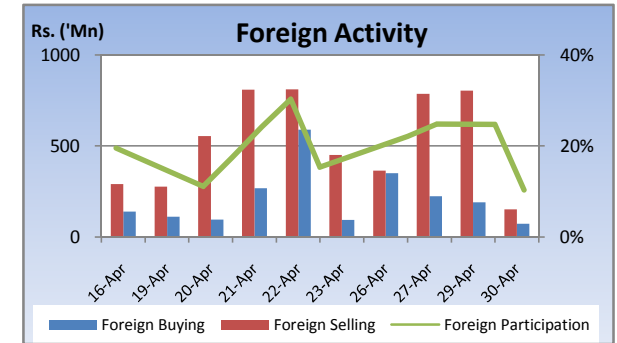
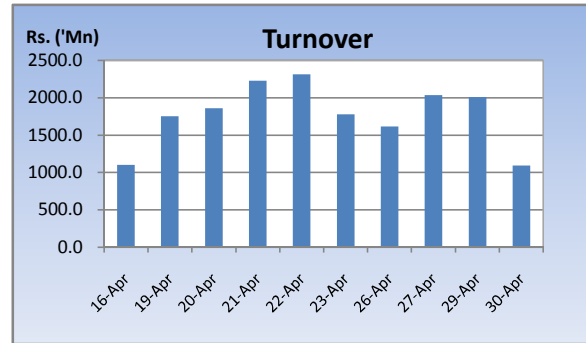
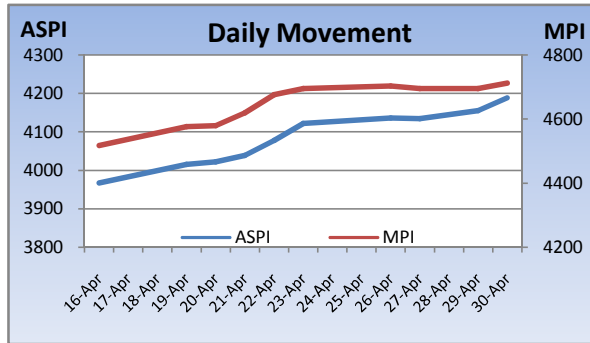


Weekly Market Update

Week Ending: April 30th, 2010



Market Statistics			Top 5 Gainers		Previous	Current	Change	High	Low	Volume	Turnover (Rs. 'Mn)	
ASPI	4188.88	4121.64	1.63%	ACME	22.25	39.00	75.28%	45.50	21.00	1,967,800	70,562,154	
MPI	4712.43	4695.83	0.35%	RAIGAM SALTERNES	2.50	4.30	72.00%	5.25	4.00	58,597,000	268,934,625	
MARKET CAP. (Rs. 'Bn)	1363.35	1340.72	1.69%	AMANA	19.75	27.50	39.24%	45.25	19.75	2,550,600	82,686,325	
MARKET PER(x)	20.67	20.33	1.67%	CEYLON LEATHER	89.00	120.75	35.67%	136.00	89.75	2,021,000	239,194,112	
MARKET PBV(x)	2.08	2.05	1.46%	COLOMBO LAND	8.00	10.75	34.38%	11.50	8.00	20,134,200	200,822,130	
Average Daily			Top 5 Losers		Previous	Current	Change	High	Low	Volume	Turnover (Rs. 'Mn)	
TURNOVER	1689.93	1987.68	-15.0%	SEYLAN MERCHANT	1.30	1.20	-7.69%	1.30	1.20	6,862,300	8,332,200	
VOLUME	82.65	78.20	5.7%	SINGER IND.	102.25	95.00	-7.09%	95.00	95.00	100	9,500	
FOREIGN PURCHASES	210.63	232.81	-9.5%	COLD STORES	215.00	200.00	-6.98%	219.75	200.00	2,800	574,651	
FOREIGN SALES	527.50	581.34	-9.3%	EASTERN MERCHANT	250.00	235.00	-6.00%	249.50	235.00	300	73,400	
NET FOREIGN	-316.87	-348.53	9.1%	HEMAS POWER	22.00	20.75	-5.68%	21.75	20.00	613,200	12,755,825	
FOREIGN PARTICIPATION	21.8%	20.5%	6.6%	Top 5 by Turnover		Previous	Current	Change	High	Low	Volume	Turnover (Rs. 'Mn)
Sector Summary				JKH	185.25	185.25	0.00%	187.00	184.50	5,454,000	1,008,992,050	
OIL PALMS	53,772.23	44,952.85	19.62%	OVERSEAS REALTY	16.00	17.50	9.38%	18.00	15.75	25,671,300	432,712,725	
INFORMATION TECHNOLOG	111.27	97.36	14.29%	NAT. DEV. BANK	221.75	218.25	-1.58%	222.00	217.00	1,669,600	367,603,657	
FOOTWEAR AND TEXTILES	832.94	739.91	12.57%	JANASHAKTHI INS.	14.00	14.25	1.79%	14.50	13.75	20,654,000	289,465,175	
LAND AND PROPERTY	421.82	381.70	10.51%	RAIGAM SALTERNES	2.50	4.30	72.00%	5.25	4.00	58,597,000	268,934,625	
INVESTMENT TRUSTS	27,887.45	25,928.66	7.55%	Top 5 by Volume		Previous	Current	Change	High	Low	Volume	Turnover (Rs. 'Mn)
MOTORS	9,188.90	9,176.96	0.13%	RAIGAM SALTERNES	2.50	4.30	72.00%	5.25	4.00	58,597,000	268,934,625	
HOTELS AND TRAVELS	4,006.37	4,008.32	-0.05%	NAWALOKA	4.20	4.70	11.90%	4.70	4.30	32,987,400	148,231,933	
CONSTRUCTION AND ENGI	4,103.41	4,118.24	-0.36%	OVERSEAS REALTY	16.00	17.50	9.38%	18.00	15.75	25,671,300	432,712,725	
TRADING	9,364.43	9,458.91	-1.00%	JANASHAKTHI INS.	14.00	14.25	1.79%	14.50	13.75	20,654,000	289,465,175	
POWER AND ENERGY	88.24	89.35	-1.24%	COLOMBO LAND	8.00	10.75	34.38%	11.50	8.00	20,134,200	200,822,130	

Market Review

Market saw a slow upward movement in the indices this week as most big cap counters remained flat awaiting the quarterly results while heavy buying interest into the mid cap counters boosted turnover. **During the week Raigam Salterns started trading with heavy gains on the first day.** Heavy trading in the property sector was also observed. The benchmark ASPI gained 67.24 points or 1.63% week on week while the more sensitive MPI reported a week on week gained of 16.60 points or 0.35%.

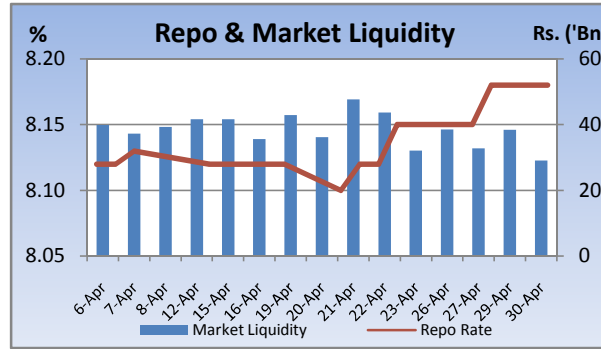
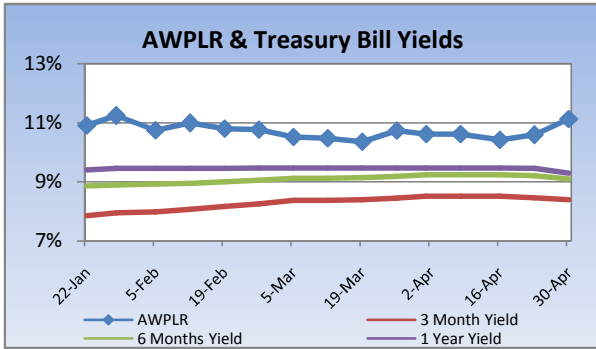
Compared to previous week's closing levels the market gained Rs.23 billion approximately or 1.69% in value this week to close at Rs.1363.35 Bn on Friday.

Total market turnover for the week amounted to Rs.6.7 Bn with an average daily turnover of Rs.1.7 Bn. Turnover for the week witnessed 32% decrease compared to the last week's market turnover of Rs.9.9 Bn.

Heavily traded shares of the week under review were Raigam Wayamba and Nawaloka with the former being highest in terms of volume for the week, trading over 59m shares. The counter gained 72% during the week in value on a Week on Week basis. JKH and Overseas Reality contributed heavily to the week's market turnover, whilst the former being the highest contributor to the week's market turnover with Rs.1Bn and remaining flat in value during the week.

FII participation gained to 22% of total turnover this week, from 21% reported last week. FII interest was negative during the week with a net outflow of Rs.1.2Bn, a 27% increase compared to last week's net outflow of Rs.1.7Bn.

Company	Price	P/BV	PER 10E	PER 11E
BANKING				
COMMERCIAL BANK	239.50	2.12	14.48	13.54
DFCC	204.25	1.36	11.41	11.70
HNB	234.50	2.22	12.32	14.92
NDB	218.25	1.30	8.57	9.72
NTB	37.25	1.42	11.38	9.48
SAMPATH BANK	290.25	1.84	10.61	12.04
BEVERAGE, FOOD & TOBACCO				
CTC	310.25	18.43	14.12	12.03
DISTILLERIES	124.50	1.57	13.15	11.22
CHEMICALS & PHARMACEUTICALS				
CIC	72.00	1.38	11.35	10.80
CONSTRUCTION & ENGINEERING				
DOCKYARD	292.50	3.42	9.30	8.07
DIVERSIFIED HOLDINGS				
AITKEN SPENCE	1,450.25	2.16	18.17	14.98
CARSONS	568.75	2.88	15.53	13.89
HAYLEYS	281.00	1.61	17.16	22.61
HEMAS HOLDINGS	132.50	1.81	16.64	11.67
JOHN KEELLS HOLDINGS	185.25	2.42	34.80	26.23
HOTELS & TRAVELS				
AITKEN SPENCE HOTEL HOLDINGS	459.75	3.70	54.70	25.17
ASIAN HOTELS AND PROPERTIES	145.75	2.67	61.34	27.14
KEELLS HOTELS	20.25	3.16	(115.79)	37.55
MANUFACTURING				
ACL CABLES	81.00	1.30	54.51	19.03
CHEVRON LUBRICANTS	175.00	7.37	14.05	14.97
LANKA TILES	99.25	2.32	13.72	9.84
ROYAL CERAMICS	140.50	2.10	8.48	6.93
TOKYO CEMENT	32.25	1.68	107.50	20.16
PLANTATIONS				
AGALAWATTE	39.25	1.92	10.55	12.91
KEGALLE	73.50	1.25	8.13	7.12
KELANI VALLEY	71.50	1.56	(57.05)	7.72
POWER & ENERGY				
LANKA IOC	17.00	1.17	(7.07)	21.81
TELECOMMUNICATIONS				
DIALOG	7.25	2.10	(4.84)	17.48

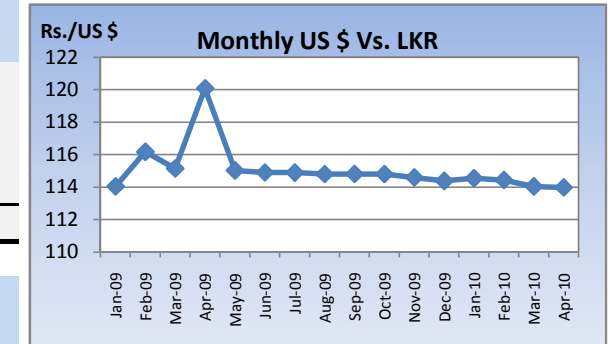


Currency Board

	Current	Previous	Change
USD EXCHANGE RATE			
- AVERAGE MIDDLE RATE	113.98	113.92	0.05%
- FORWARD 1 MONTH	114.54	114.42	0.10%
- FORWARD 3 MONTHS	115.64	115.45	0.16%
BRITISH POUND	174.72	174.65	0.04%
EURO	150.86	150.55	0.20%
JAPANESE YEN	1.21	1.22	-0.63%
INDIAN RUPEE	2.57	2.57	0.06%
AUSTRALIAN DOLLAR	105.95	105.35	0.57%
SINGAPORE DOLLAR	83.28	82.90	0.45%

Treasury Bill Auction

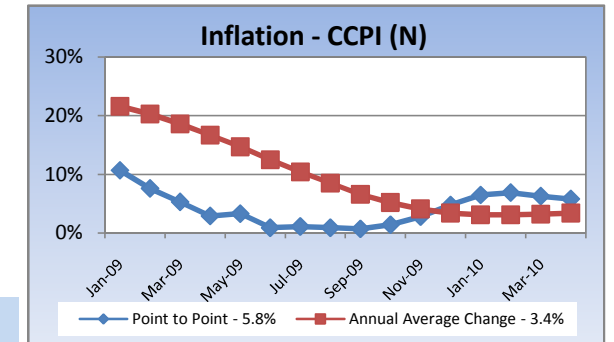
Maturity	Weighted Average Yield			Amount Offered Rs. ('Mn)	Bids Received Rs. ('Mn)	Amount Accepted Rs. ('Mn)
	Current Week	Previous Week	Change Basis Points			
3 MONTHS	8.40%	8.46%	-6.00	1,000	4,058	1,000
6 MONTHS	9.10%	9.21%	-11.00	2,500	14,484	2,500
12 MONTHS	9.30%	9.46%	-16.00	4,000	12,168	7,285
				7,500	30,710	10,785



Interest Rates

	Current Week	Previous Week	Year Ago
COMMERCIAL BANK AVERAGE WEIGHTED PRIME LENDING RATE [AWPLR]	11.13	10.59	18.16
OVERNIGHT RATE ON REPURCHASE AGREEMENTS	7.50	7.50	9.00
SRI LANKA INTER BANK OFFER RATE [SLIBOR]			
- OVERNIGHT	9.06	9.01	9.80
- 7 DAYS	9.25	9.25	11.38
- 1 MONTH	9.47	9.52	12.27
- 3 MONTHS	9.75	9.72	13.60
- 6 MONTHS	9.98	10.01	14.65
- 1 YEAR	10.25	10.32	15.73
	April 2010	Month Ago	Year Ago
COMMERCIAL BANK AVERAGE WEIGHTED DEPOSIT RATE [AWDR]	7.13	7.22	11.52
COMMERCIAL BANK AVERAGE WEIGHTED FIXED DEPOSIT RATE [AWFDR]	9.61	9.71	16.27

Inflation



Point to Point - 5.8%
Annual Average Change - 3.4%

Tea Market

Colombo Tea Auction

SALES (kg)	Current	Previous	Change	Year to date	Year to date	Change
	Sale 16-2010	Sale 15-2010		2010	2009	
HIGH GROWN	1,296,048	1,357,312	-4.51%	22,346,939	17,189,139	30.01%
MEDIUM GROWN	844,635	915,029	-7.69%	15,309,249	12,529,347	22.19%
LOW GROWN	3,231,372	3,262,232	-0.95%	63,587,616	46,092,366	37.96%
TOTAL	5,372,055	5,534,573	-2.94%	101,243,804	75,810,852	33.55%

PRICES (Rs./kg)

	2009	Mar-10	Apr-10	Sale 16-2010	Sale 15-2010	Change
HIGH GROWN	321.28	356.02	351.94	354.49	355.48	-0.28%
MEDIUM GROWN	316.79	348.37	345.86	342.97	347.22	-1.22%
LOW GROWN	388.44	395.36	388.23	390.57	392.92	-0.60%
TOTAL	362.70	379.25	372.31	374.38	376.18	-0.48%

PRODUCTION (kg) BY

ELEVATION	February			Year to date		
	2010	2009	Change	2010	2009	Change
HIGH GROWN	5,373,023	4,097,599	31.13%	12,099,824	9,289,376	30.25%
MEDIUM GROWN	3,754,110	2,231,473	68.23%	7,755,486	5,154,452	50.46%
LOW GROWN	14,380,879	6,552,619	119.47%	32,115,045	16,322,472	96.75%
TOTAL	23,508,012	12,881,691	82.49%	51,970,355	30,766,300	68.92%

PRODUCTION (kg) BY

CATEGORY	February			Year to date		
	2010	2009	Change	2010	2009	Change
ORTHODOX	22,074,269	11,871,994	85.94%	48,829,362	28,345,450	72.27%
CTC	1,224,659	914,875	33.86%	2,731,897	2,160,013	26.48%
TOTAL BLACK TEA	23,298,928	12,786,869	82.21%	51,561,259	30,505,463	69.02%
GREEN TEA	209,085	94,821	120.50%	409,096	260,838	56.84%
TOTAL	23,508,013	12,881,690	82.49%	51,970,355	30,766,301	68.92%

ANALYSIS OF TOTAL

TEA PRODUCTION	February 2010	Year to date 2010
HIGH GROWN	22.86%	23.28%
MEDIUM GROWN	15.97%	14.92%
LOW GROWN	61.17%	61.79%
CTC AS A % OF BLACK TEA PRODUCTION	5.26%	5.30%

Tea Prices

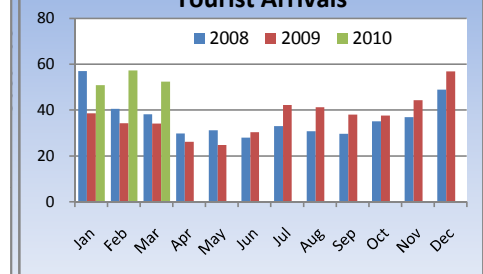


Tourism

SRI LANKA

ARRIVALS	2010	2009	Change
March	52,352	34,065	53.68%
Year to date	160,409	106,702	50.33%
Dec-09	71.2%	49.7%	43.26%
Foreign Guest Night	359,342	261,864	37.22%

Tourist Arrivals

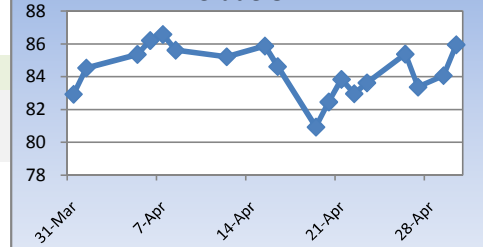


Crude Oil

NYMEX CRUDE OIL FUTURES

	30-Apr-10	23-Apr-10	Change
US\$/BBL	85.94	83.62	2.77%

Crude Oil



This document has been prepared and issued on the basis of publicly available information, internally developed data and other sources, believed to be reliable. Capital Alliance Securities (Private) Limited however does not warrant its completeness or accuracy. Opinions and estimates given constitute a judgment as of the date of the material and are subject to change without notice. This report is not intended as an offer or solicitation for the purchase or sale of any financial instrument. The recipient of this report must make their own independent decision regarding any securities, investments or financial instruments mentioned herein. Securities or financial instruments mentioned may not be suitable to all investors. Capital Alliance Securities (Private) Limited its directors, officers, consultants, employees, outsourced research providers associates or business partner, will not be responsible, for any claims damages, compensation, suits, damages, loss, costs, charges, expenses, outgoing or payments including attorney's fees which recipients of the reports suffers or incurs directly or indirectly arising out actions taken as a result of this report. This report is for the use of the intended recipient only. Access, disclosure, copying, distribution or reliance on any of it by anyone else is prohibited and may be a criminal offence.

Head Office

5th Floor, Millennium House,
 No.46/58, Nawam Mawatha,
 Colombo 2, Sri Lanka
 General: +94 11 2317777
 Fax: +94 11 2317788
 Email: info@capitalalliance.lk
 Website: www.capitalalliance.lk

Equity

CEO - Securities

Harinlal Aturupane: +94 11 231 7760

Colombo

Dilruk A. Fernando +94 777 721 483
 Janaka Palapathwala: +94 770 592 243
 Lakshan Algama Perera: +94 777 447 407
 Chanaka Sanoj: +94 773 850 227
 Milanka Induruwage: +94 777 261 893
 Buddhenia Narangoda: +94 11 2317 754
 Ifadh Marikar: +94 772 962 567
 Thanuja de Silva: +94 770 556 577

Matara

Inok Wijesuriya: +94 41 439 0610
 Mahi Liyanage: +94 772 962 557
 Viraj Nanawatte: +94 772 962 541
 Kithsiri Jayasinghe: +94 777 790 657

Government Securities

K. H. R. Thilakarathna: +94 11 231 7752
 W. A. Susantha: +94 11 231 7757
 Dumindu Silva: +94 11 231 7753

Research

Dimantha Mathew: +94 777 345 679

Branches

Matara

No.38, Station Road,
 Matara
 Tel: +94 41 4390610
 Fax: +94 41 4390611

Jaffna

Laxan Plaza,
 No.356B, Kasthuriar Road,
 Jaffna
 Tel: +94 21 4591111
 Fax: +94 21 4591111

Kurunegala

1st Floor, Union Assurance Building,
 No.6, Rajapihilla Road, Kurunegala
 Tel: +94 37 2222034
 Fax: +94 37 2222035

Negombo

Jude City Building,
 No.142, Greens Road, Negombo
 Tel: +94 31 2227843/4
 Fax: +94 31 2227843

Galle

No.30, Sri Devamitta Mawatha,
 Galle
 Tel: +94 91 2227631/2
 Fax: +94 91 2227632

Jaffna

B. Mugundan: +94 21 459 1111

Negombo

T. Dananjaya: +94 773 593 016
 Nihal Fernando: +94 773 286 895

Kurunegala

Indunil Pradeep: +94 773 741 552
 P. R. Chandrasena: +94 773 837 325

Galle

Isuru Jayawardena: +94 773 576092