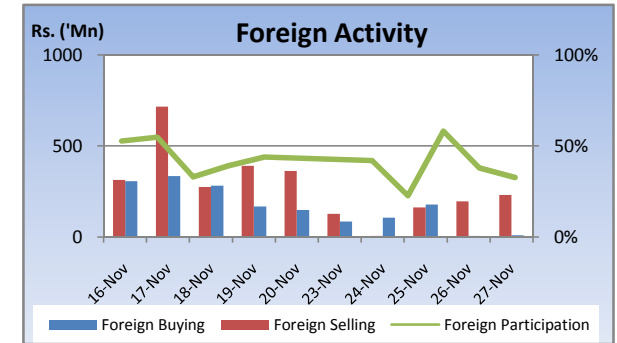
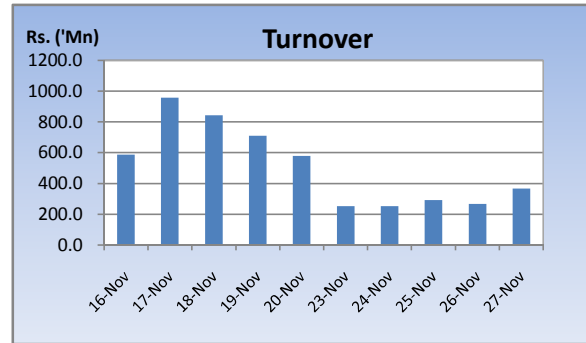
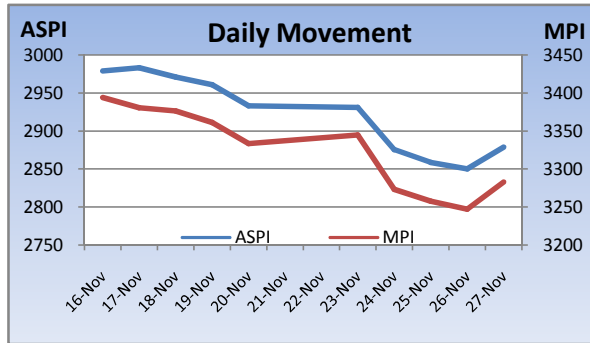


Weekly Market Update

Week Ending: November 27th, 2009



Market Statistics	Current	Previous	Change	Top 5 Gainers	Previous	Current	Change	High	Low	Volume	Turnover (Rs. 'Mn)
ASPI	2878.96	2933.35	-1.85%	KALAMAZOO	600.00	800.00	33.33%	800.00	800.00	100	80,000
MPI	3282.96	3333.56	-1.52%	TOKYO CEMENT	211.50	249.75	18.09%	259.00	211.25	63,600	15,654,255
MARKET CAP. (Rs. 'Bn)	928.14	945.44	-1.83%	ASIAN ALLIANCE	46.75	52.00	11.23%	58.00	46.00	3,100	158,750
MARKET PER(x)	14.07	14.27	-1.40%	MTD WALKERS	107.50	115.00	6.98%	125.00	110.00	20,100	2,340,781
MARKET PBV(x)	1.42	1.44	-1.39%	SATHOSA MOTORS	116.00	124.00	6.90%	124.00	96.25	400	49,600
Average Daily				Top 5 Losers							
TURNOVER	287.48	736.66	-61.0%	CFI	34.00	28.00	-17.65%	34.00	28.00	1,800	59,400
VOLUME	9.78	13.90	-29.6%	NUWARA ELIYA	400.00	342.00	-14.50%	342.00	342.00	400	136,800
FOREIGN PURCHASES	78.21	248.41	-68.5%	LANKEM DEV.	11.00	9.75	-11.36%	10.50	9.75	24,100	240,800
FOREIGN SALES	145.44	412.59	-64.8%	PARQUET	11.50	10.25	-10.87%	11.25	10.25	10,600	113,450
NET FOREIGN	-67.23	-164.19	-59%	MERCHANT BANK	20.75	18.50	-10.84%	20.50	17.00	97,300	1,741,693
FOREIGN PARTICIPATION	38.9%	44.9%	-13.3%	Top 5 by Turnover							
Sector Summary				NAT. DEV. BANK	180.00	178.50	-0.83%	183.00	175.00	2,131,300	381,895,041
CONSTRUCTION AND ENGI	2,491.81	2,458.08	1.37%	CEYLON LEATHER	57.50	56.50	-1.74%	57.50	53.00	3,643,300	200,375,065
MOTORS	6,410.20	6,379.71	0.48%	DOCKYARD	187.25	189.50	1.20%	190.00	182.00	515,100	97,252,983
HEALTH CARE	394.14	395.65	-0.38%	CIC	56.00	55.25	-1.34%	57.50	55.00	1,427,800	78,600,620
MANUFACTURING	1,678.03	1,689.10	-0.66%	TOKYO CEMENT[NON VOTING]	17.00	17.00	0.00%	17.50	16.25	2,750,900	46,707,750
LAND AND PROPERTY	313.01	315.57	-0.81%	Top 5 by Volume							
POWER AND ENERGY	79.08	81.44	-2.90%	SIERRA CABL	2.10	2.00	-4.76%	2.10	1.90	4,369,600	8,743,030
BANKS FINANCE AND INSUI	5,987.02	6,179.65	-3.12%	SEYLAN MERCHANT[NON VOTING]	0.70	0.70	0.00%	0.80	0.70	4,179,400	2,925,840
FOOTWEAR AND TEXTILES	582.21	605.55	-3.85%	PIRAMAL GLASS	2.00	2.00	0.00%	2.10	1.90	3,767,300	7,529,790
INFORMATION TECHNOLO	71.53	75.50	-5.26%	CEYLON LEATHER	57.50	56.50	-1.74%	57.50	53.00	3,643,300	200,375,065
SERVICES	8,854.46	9,349.67	-5.30%	TOKYO CEMENT[NON VOTING]	17.00	17.00	0.00%	17.50	16.25	2,750,900	46,707,750

Market Review

Market declined throughout the week before picking up on Friday ahead of the December holiday season. Turnover levels declined dramatically with weak buying interest while heavy contribution to the turnover was seen through the selling of shares by the Galleon Fund. The benchmark ASPI declined 54.39 points or 1.85% week on week while the more sensitive MPI reported a week on week decline of 50.60 points or 1.52%.

Compared to previous week's closing levels the market declined Rs.17.3 billion approximately or 1.83% in value this week to close at Rs.928.14 Bn on Friday.

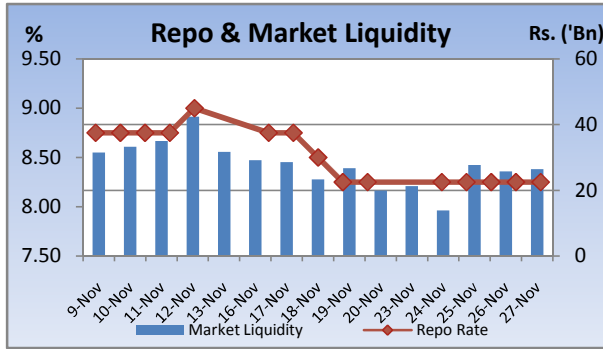
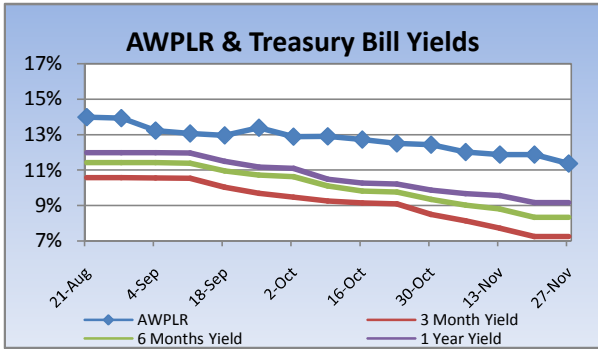
Total market turnover for the week amounted to Rs.1.43 Bn with an average daily turnover of Rs.287m. Turnover for the week witnessed 61% decrease compared to the last week's market turnover of Rs.3.68 Bn.

Heavily traded shares of the week under review were Sierra Cables and Seylan Merchant (NV) with the former being highest in terms of volume for the week, trading over 4.4m shares. The counter declined 4.76% during the week in value on a Week on Week basis. NDB and Ceylon Leather Products contributed heavily to the week's market turnover, whilst the former being the highest contributor to the week's market turnover with Rs.382m.

FII participation declined to 38.9% of total turnover this week, from 44.9% reported last week. FII interest was negative during the week with a net outflow of Rs.336m, a 59% increase compared to last week's net outflow of Rs.821m.

The final day of the week, 27th November 2009, saw the opening of the Initial Public Offering of 120,000,000 shares of Renuka Agri Foods Limited which was announced to be over-subscribed by 9.30am on the same day. The company is to be listed on the Diri Savi Board.

Company	Price	P/BV	PER 10E	PER 11E
BANKING				
COMMERCIAL BANK	167.50	1.48	10.13	9.47
DFCC	141.00	0.94	8.60	8.01
HNB	164.00	1.55	12.42	11.03
NDB	178.50	1.07	6.96	5.79
NTB	34.00	1.24	8.12	6.45
SAMPATH BANK	175.00	1.01	6.57	5.32
BEVERAGE, FOOD & TOBACCO				
CTC	171.75	10.20	10.65	9.95
DISTILLERIES	88.25	1.12	10.85	9.36
CHEMICALS & PHARMACEUTICALS				
CIC	55.25	1.13	15.77	12.71
CONSTRUCTION & ENGINEERING				
DOCKYARD	189.50	2.21	6.01	5.23
DIVERSIFIED HOLDINGS				
AITKEN SPENCE	895.00	1.37	11.22	9.25
CARSONS	326.25	1.78	16.62	14.75
HAYLEYS	154.00	0.90	14.40	17.55
HEMAS HOLDINGS	120.00	1.70	16.67	14.78
JOHN KEELLS HOLDINGS	141.00	1.87	28.22	25.21
HOTELS & TRAVELS				
AITKEN SPENCE HOTEL HOLDINGS	220.00	1.85	12.40	8.44
ASIAN HOTELS AND PROPERTIES	70.25	1.30	24.38	11.20
KEELLS HOTELS	18.25	2.93	41.44	23.20
MANUFACTURING				
ACL CABLES	67.25	1.08	11.67	9.71
CHEVRON LUBRICANTS	212.75	4.48	10.04	9.10
LANKA TILES	54.25	1.35	7.26	5.38
ROYAL CERAMICS	53.75	0.89	4.59	3.65
TOKYO CEMENT	249.75	1.29	11.49	6.12
PLANTATIONS				
AGALAWATTE	18.50	0.91	4.97	6.06
KEGALLE	31.25	0.58	3.18	2.53
KELANI VALLEY	50.00	1.23	5.14	4.23
POWER & ENERGY				
LANKA IOC	15.75	1.09	20.97	18.64
TELECOMMUNICATIONS				
DIALOG	7.00	1.88	(51.73)	22.91

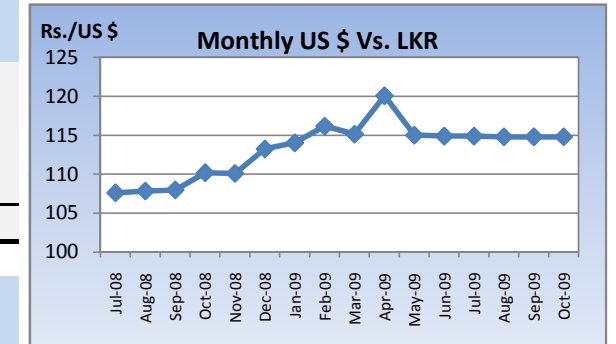


Currency Board

	Current	Previous	Change
USD EXCHANGE RATE			
- AVERAGE MIDDLE RATE	114.48	114.24	0.21%
- FORWARD 1 MONTH	114.85	114.69	0.14%
- FORWARD 3 MONTHS	115.58	115.35	0.20%
BRITISH POUND	187.56	189.91	-1.23%
EURO	170.89	170.12	0.45%
JAPANESE YEN	1.33	1.28	3.61%
INDIAN RUPEE	2.47	2.46	0.19%
AUSTRALIAN DOLLAR	103.34	104.71	-1.31%
SINGAPORE DOLLAR	82.51	82.23	0.34%

Treasury Bill Auction

Maturity	Weighted Average Yield			Amount Offered Rs. ('Mn)	Bids Received Rs. ('Mn)	Amount Accepted Rs. ('Mn)
	Current Week	Previous Week	Change Basis Points			
3 MONTHS	7.25%	7.25%	0.00	1,500	3,808	3,001
6 MONTHS	8.33%	8.33%	0.00	3,500	6,005	3,910
12 MONTHS	9.17%	9.17%	0.00	6,500	11,265	4,830
				11,500	21,078	11,741

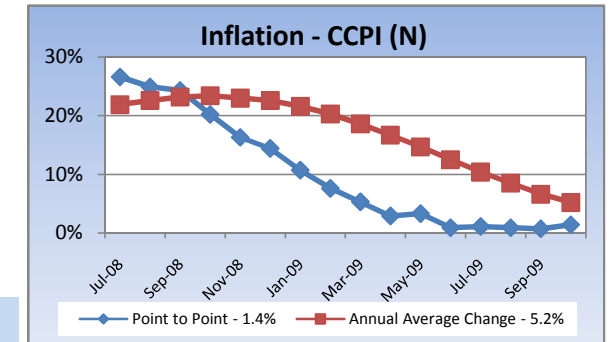


Interest Rates

	Current Week	Previous Week	Year Ago
COMMERCIAL BANK AVERAGE WEIGHTED PRIME LENDING RATE [AWPLR]	11.37	11.88	20.72
OVERNIGHT RATE ON REPURCHASE AGREEMENTS	7.50	7.50	10.50
SRI LANKA INTER BANK OFFER RATE [SLIBOR]			
- OVERNIGHT	9.16	8.82	19.27
- 7 DAYS	9.40	9.11	19.19
- 1 MONTH	9.58	9.32	19.44
- 3 MONTHS	9.75	9.43	19.81
- 6 MONTHS	9.98	9.67	20.13
- 1 YEAR	10.24	9.92	20.44

	October 2009	Month Ago	Year Ago
COMMERCIAL BANK AVERAGE WEIGHTED DEPOSIT RATE [AWDR]	9.76	10.34	11.28
COMMERCIAL BANK AVERAGE WEIGHTED FIXED DEPOSIT RATE [AWFDR]	13.05	13.80	16.48

Inflation



Point to Point - 1.4%
Annual Average Change - 5.2%

Tea Market

Colombo Tea Auction

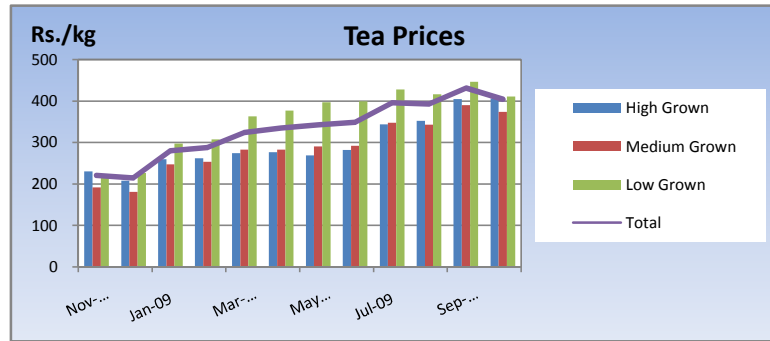
SALES (kg)	Current	Previous	Change	Year to date	Year to date	Change
	Sale 46-2009	Sale 45-2009		2009	2008	
HIGH GROWN	1,409,264	1,287,813	9.43%	52,286,926	57,211,032	-8.61%
MEDIUM GROWN	890,212	947,415	-6.04%	39,336,145	39,370,767	-0.09%
LOW GROWN	3,876,195	3,981,698	-2.65%	155,403,443	147,250,163	5.54%
TOTAL	6,175,671	6,216,926	-0.66%	247,026,514	243,831,961	1.31%

PRICES (Rs./kg)	2008	Sep-09	Oct-09	Sale 46-2009	Sale 45-2009	Change
HIGH GROWN	273.83	404.66	406.37	407.61	409.16	-0.38%
MEDIUM GROWN	270.13	390.03	373.90	360.47	355.16	1.50%
LOW GROWN	336.38	445.95	410.84	387.23	382.47	1.24%
TOTAL	310.81	431.20	404.29	388.02	383.83	1.09%

PRODUCTION (kg) BY ELEVATION	October			Year to date		
	2009	2008	Change	2009	2008	Change
HIGH GROWN	5,937,710	6,716,999	-11.60%	58,907,790	70,829,997	-16.83%
MEDIUM GROWN	3,462,967	3,830,799	-9.60%	36,268,970	42,767,548	-15.20%
LOW GROWN	16,533,060	13,790,180	19.89%	139,613,001	160,820,734	-13.19%
TOTAL	25,933,737	24,337,978	6.56%	234,789,761	274,418,279	-14.44%

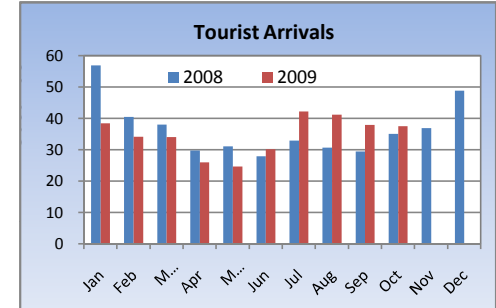
PRODUCTION (kg) BY CATEGORY	October			Year to date		
	2009	2008	Change	2009	2008	Change
ORTHODOX	24,506,892	22,437,743	9.22%	220,110,097	258,361,795	-14.81%
CTC	1,246,422	1,601,972	-22.19%	12,736,620	13,207,981	-3.57%
TOTAL BLACK TEA	25,753,314	24,039,715	7.13%	232,846,717	271,569,776	-14.26%
GREEN TEA	180,423	298,263	-39.51%	1,943,044	2,848,503	-31.79%
TOTAL	25,933,737	24,337,978	6.56%	234,789,761	274,418,279	-14.44%

ANALYSIS OF TOTAL TEA PRODUCTION	October 2009	Year to date 2009
HIGH GROWN	22.90%	25.09%
MEDIUM GROWN	13.35%	15.45%
LOW GROWN	63.75%	59.46%
CTC AS A % OF BLACK TEA PRODUCTION	4.84%	5.47%



Tourism

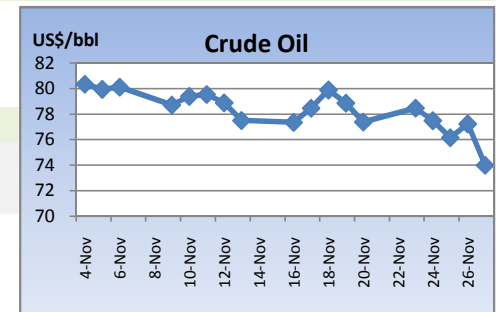
SRI LANKA ARRIVALS	2009	2008	Change
October	37,575	35,103	7.04%
Year to date	346,717	352,649	-1.68%
Sep-09	Sep-08	Change	
Occupancy	51.4%	40.0%	28.50%
Foreign Guest Night	424,434	210,867	101.28%



Crude Oil

NYMEX CRUDE OIL FUTURES

US\$/BBL	27-Nov	20-Nov	Change
US\$/BBL	73.99	77.37	15.52%



This document has been prepared and issued on the basis of publicly available information, internally developed data and other sources, believed to be reliable. Capital Alliance Securities (Private) Limited however does not warrant its completeness or accuracy. Opinions and estimates given constitute a judgment as of the date of the material and are subject to change without notice. This report is not intended as an offer or solicitation for the purchase or sale of any financial instrument. The recipient of this report must make their own independent decision regarding any securities, investments or financial instruments mentioned herein. Securities or financial instruments mentioned may not be suitable to all investors. Capital Alliance Securities (Private) Limited its directors, officers, consultants, employees, outsourced research providers associates or business partner, will not be responsible, for any claims damages, compensation, suits, damages, loss, costs, charges, expenses, outgoing or payments including attorney's fees which recipients of the reports suffers or incurs directly or indirectly arising out actions taken as a result of this report. This report is for the use of the intended recipient only. Access, disclosure, copying, distribution or reliance on any of it by anyone else is prohibited and may be a criminal offence.

Head Office

5th Floor, Millennium House,
 No.46/58, Nawam Mawatha,
 Colombo 2, Sri Lanka
 General: +94 11 2317777
 Fax: +94 11 2317788
 Email: info@capitalalliance.lk
 Website: www.capitalalliance.lk

Equity

CEO - Securities

Harinlal Aturupane: +94 11 231 7760

Colombo

Dilruk A. Fernando +94 777 721 483
 Lakshan Algama Perera: +94 777 447 407
 Chanaka Sanoj: +94 773 850 227
 Milanka Induruwage: +94 777 261 893
 Buddhenia Narangoda: +94 777 453 640
 Ifadh Marikar: +94 772 962 567

Matara

Lulith Karunaratne: +94 41 439 0610
 Inok Wijesuriya: +94 41 439 0610
 Mahi Liyanage: +94 772 962 557
 Viraj Nanawatte: +94 772 962 541
 Kithsiri Jayasinghe: +94 777 790 657

Government Securities

K. H. R. Thilakarathna: +94 11 231 7752
 W. A. Susantha: +94 11 231 7757
 Dumindu Silva: +94 11 231 7753
 Milindu Arumawadu: +94 11 231 7758

Research

Dimantha Mathew: +94 777 345 679

Branches

Matara

No.38, Station Road,
 Matara
 Tel: +94 41 4390610
 Fax: +94 41 4390611

Jaffna

Laxan Plaza,
 No.356B, Kasthuriar Road,
 Jaffna
 Tel: +94 21 4591111
 Fax: +94 21 4591111

Kurunegala

No.6, Rajapihilla Road,
 1st Floor, Kurunegala
 Tel: +94 37 2222034
 Fax: +94 37 2222035

Negombo

Jude City Building,
 No.142, Greens Road, Negombo
 Tel: +94 31 2227843/4
 Fax: +94 31 2227843

Galle

No.30, Sri Devamitta Mawatha,
 Galle
 Tel: +94 91 2227631/2
 Fax: +94 91 2227632

Jaffna

B. Mugundan: +94 21 459 1111

Negombo

T. Dananjaya: +94 773 593 016
 Nihal Fernando: +94 773 286 895

Kurunegala

Indunil Pradeep: +94 773 741 552
 P. R. Chandrasena: +94 773 837 325

Galle

Isuru Jayawardena: +94 773 576092